

85392, 85037

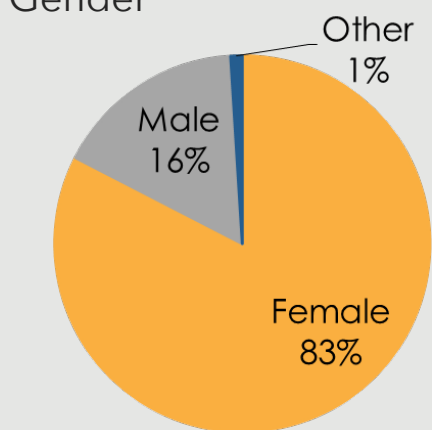
ZONE 27

Responses to the 2019 Community Health Assessment Survey from the residents of Zone 27.

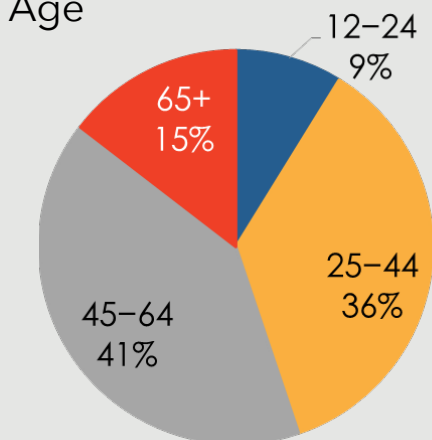


Who took the survey in Zone 27?

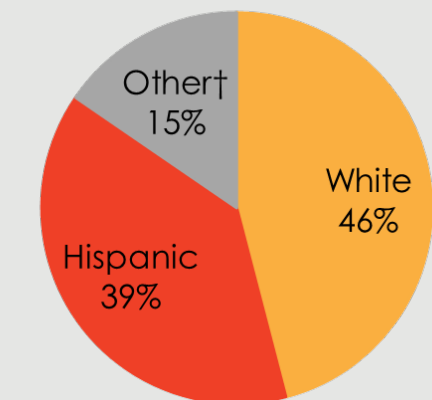
Gender



Age



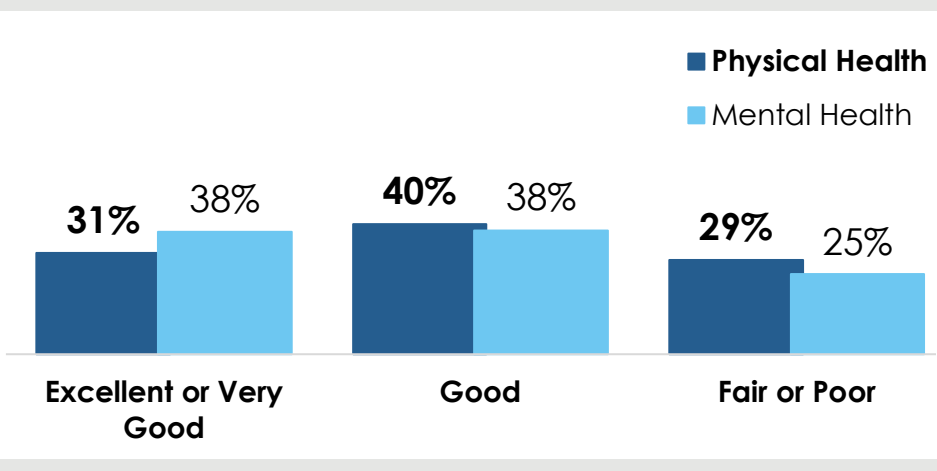
Race



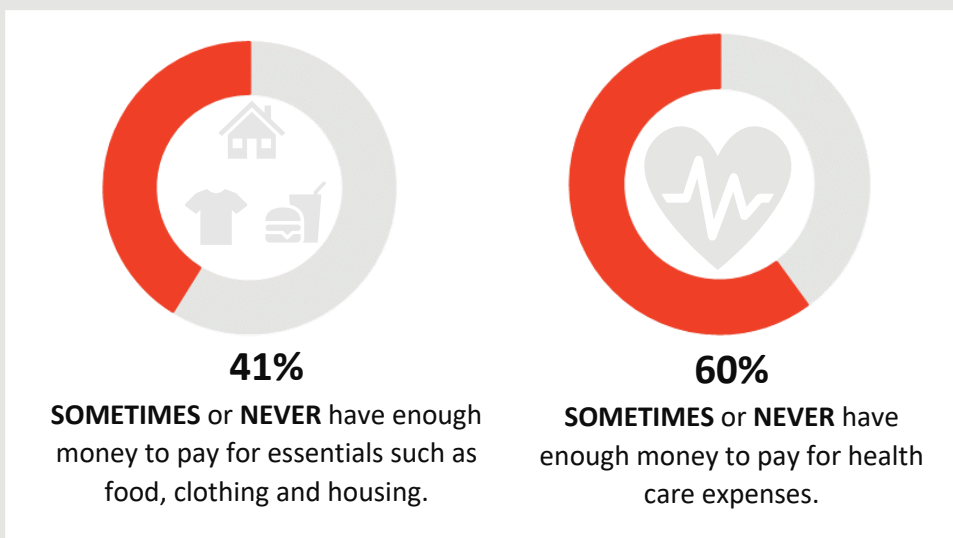
12%

reported a household income of **less than \$20,000.**

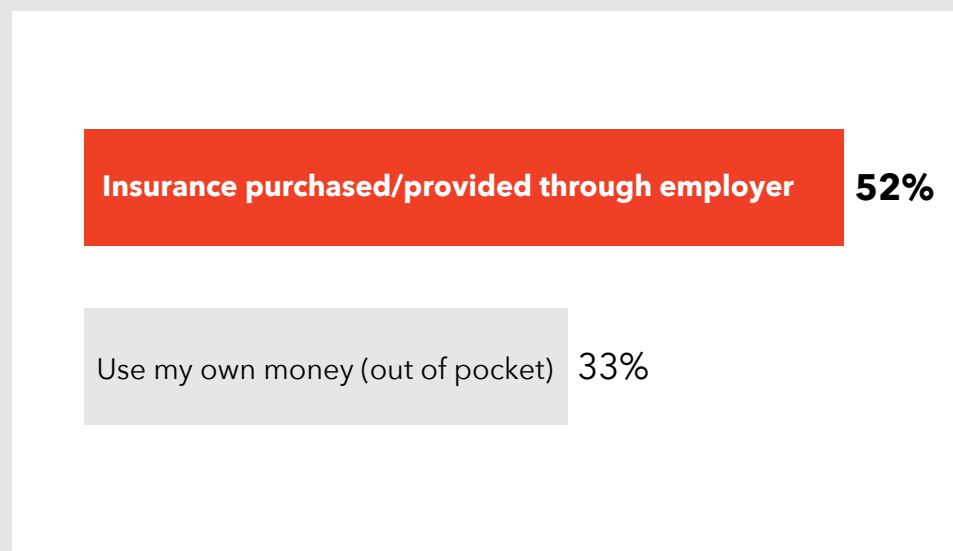
How do respondents in Zone 27 rate their Physical and Mental Health?



Do respondents in Zone 27 struggle each month to pay for medical care and/or necessities?



How do residents in Zone 27 pay for health care?



261 surveys collected.

Some demographic data may total over 100% due to rounding.

† Due to low response rates, the 'Other' category includes 'Asian', 'American Indian/Native American', 'Black or African American', 'Multi-racial', and 'Other' responses or race/ethnicity.

Zone 27 Survey Respondents

TOP 3 COMMUNITY STRENGTHS



Access to parks and recreation sites	-----	55%
Access to public libraries and community centers	-----	44%
Clean environments and streets	-----	40%

TOP 3 COMMUNITY ISSUES



Distracted driving	-----	46%
Homelessness	-----	33%
Lack of good jobs	-----	23%

TOP 3 BARRIERS TO HEALTHCARE



Underinsured	-----	33%
Inconvenient office hours	-----	29%
Difficulty finding the right provider for my care	-----	26%

TOP 3 HEALTH CONDITIONS



Alcohol or substance abuse	-----	44%
Mental health issues	-----	40%
Overweight or obesity	-----	36%

Want More?

- Find out how your city compares to other cities in Maricopa County.
- Submit a Data Request to obtain regional survey results.
- Join Synapse to partner with local organizations.

Contact:

[Eileen Aguilar](#)

(602) 859-4763

Eileen.Aguilar@maricopa.gov

Data Request:

<https://www.maricopa.gov/data-request>