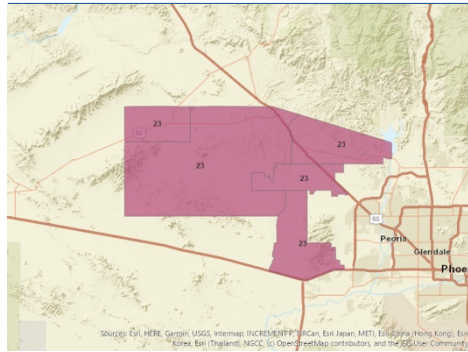


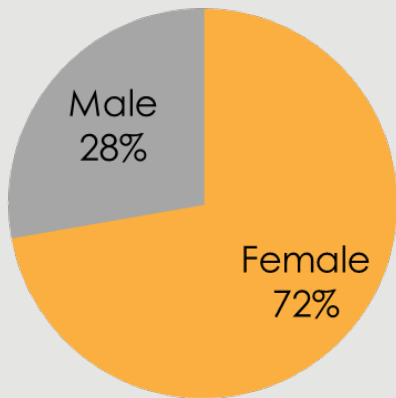
# ZONE 23

Responses to the 2019 Community Health Assessment Survey from the residents of Zone 23.

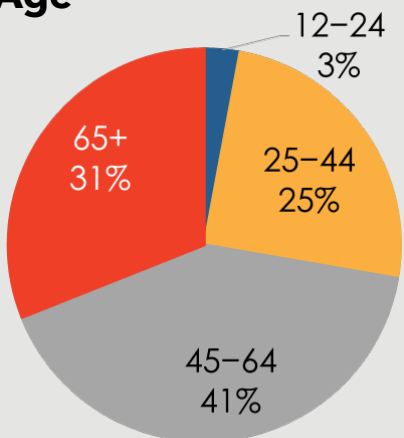


## Who took the survey in Zone 23?

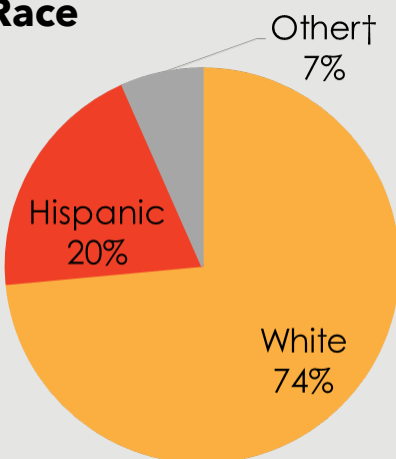
### Gender



### Age



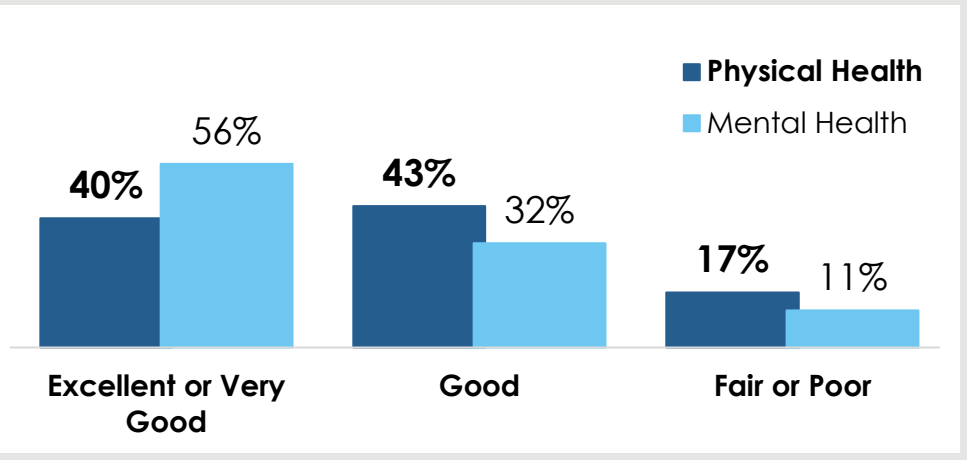
### Race



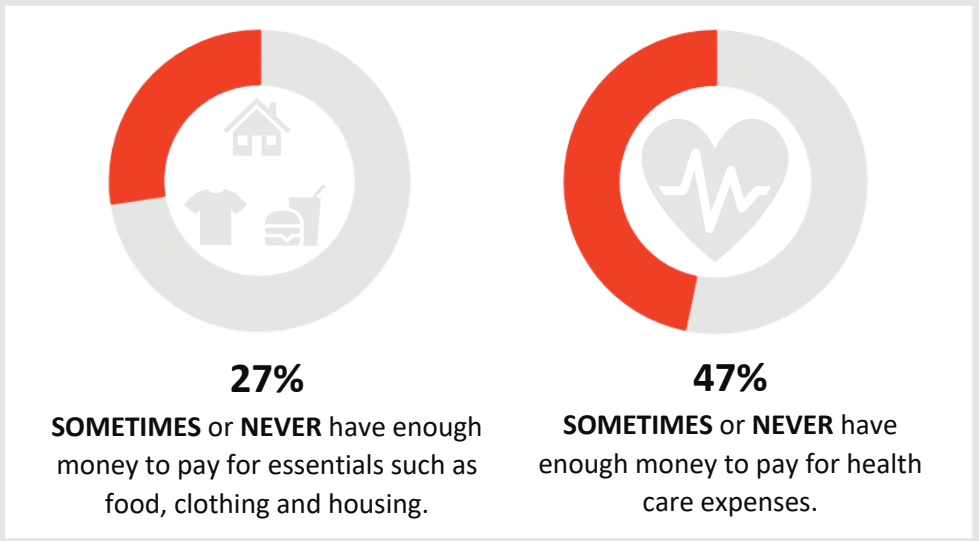
**15%**

reported a household income of **less than \$20,000.**

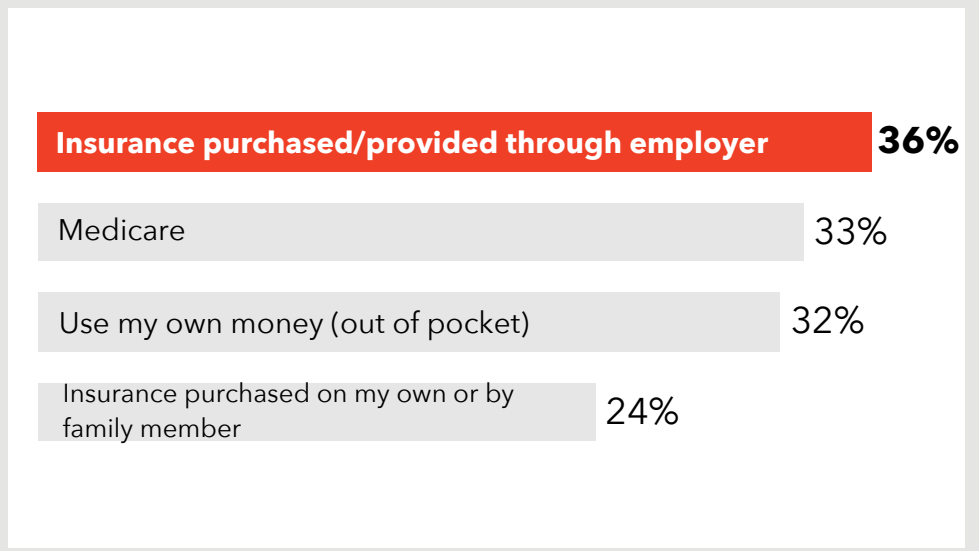
How do respondents in Zone 23 rate their Physical and Mental Health?



Do respondents in Zone 23 struggle each month to pay for medical care and/or necessities?



How do residents in Zone 23 pay for health care?



274 surveys collected.

Some demographic data may total over 100% due to rounding.

† Due to low response rates, the 'Other' category includes 'American Indian/Native American', 'Black or African American', 'Multi-racial', and 'Other' responses or race/ethnicity.

TOP 3  
COMMUNITY  
STRENGTHS



Access to parks and recreation sites	----- 61%
Clean environments and streets	----- 58%
Low crime/safe neighborhoods	----- 56%

TOP 3  
COMMUNITY  
ISSUES



Lack of good jobs	----- 42%
Lack of public transportation	----- 39%
Distracted driving	----- 32%

TOP 3  
BARRIERS TO  
HEALTHCARE



Difficulty finding the right provider for my care	----- 36%
Distance to provider	----- 34%
Underinsured	----- 21%

TOP 3  
HEALTH  
CONDITIONS



Alcohol or substance abuse	----- 47%
High blood pressure or cholesterol	----- 39%
Overweight or obesity	----- 32%



**Want More?**

- Find out how your city compares to other cities in Maricopa County.
- Submit a Data Request to obtain regional survey results.
- Join Synapse to partner with local organizations.

**Contact:**

Eileen Aguilar  
(602) 859-4763  
Eileen.Aguilar@maricopa.gov

Data Request:

<https://www.maricopa.gov/data-request>