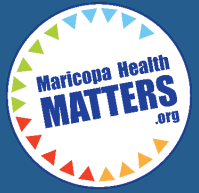


85250, 85258, 85253, 85028, 85032, 85054, 85254, 85050

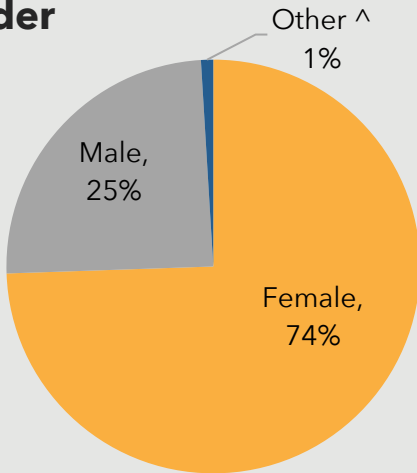


ZONE 12

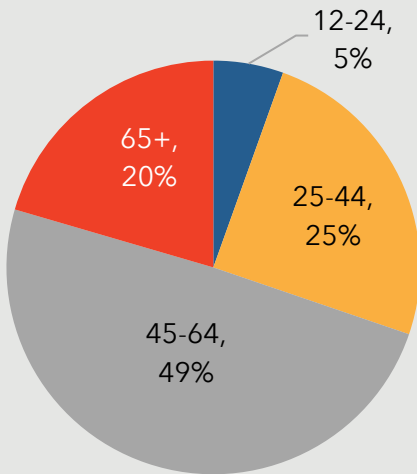
Responses to the 2019 Community Health Assessment Survey from the residents of Zone 12.

Who took the survey in Zone 12?

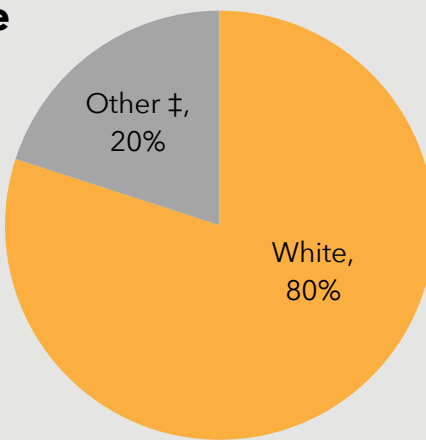
Gender



Age



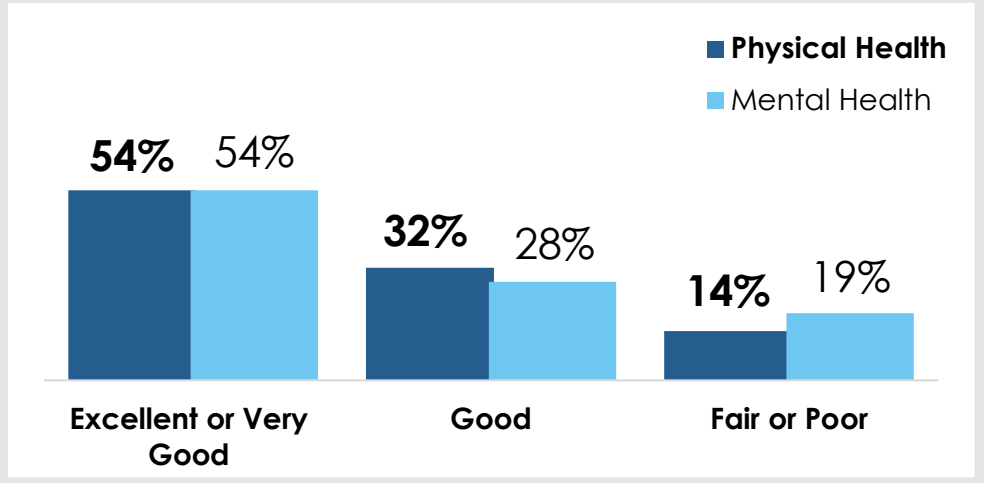
Race



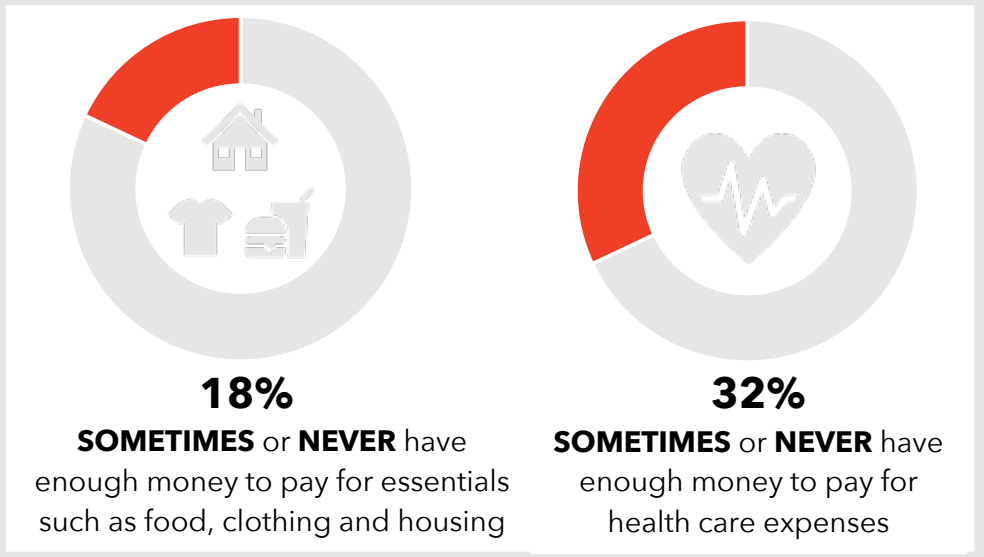
6%

reported a household income of **less than \$20,000.**

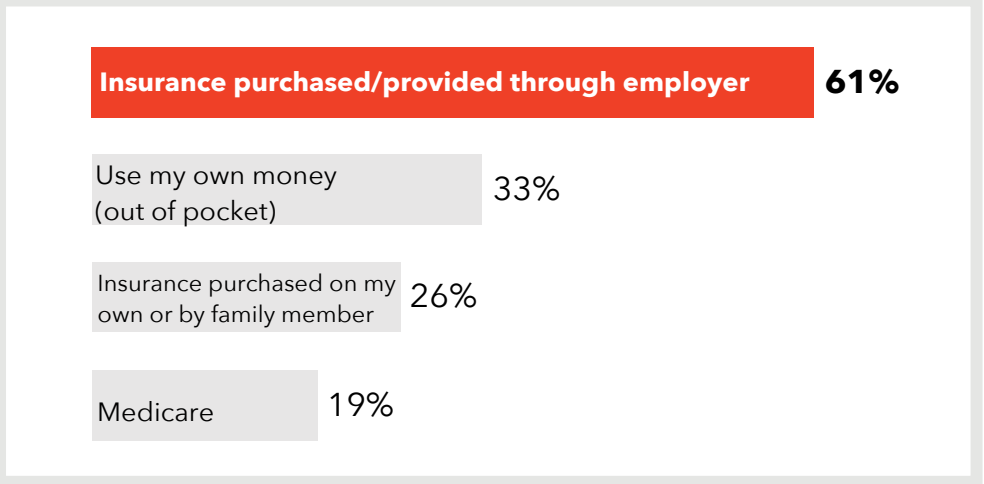
How do respondents in Zone 12 rate their Physical and Mental Health?



Do respondents in Zone 12 struggle each month to pay for medical care and/or necessities?



How do residents in Zone 12 pay for their health care?



421 surveys collected.

^ The 'Other' category includes 'Transgender' responses for gender.

‡ Due to low response rates, the 'Other' category includes 'Asian', 'Black or African American', 'American Indian or Native American', 'Hispanic or Latino', 'Multi-racial', 'Native Hawaiian or Other Pacific Islander' and 'Other' responses or race/ethnicity.

TOP 3
COMMUNITY
STRENGTHS



Access to parks and recreation sites	----- 67%
Access to public libraries and community centers	----- 56%
Clean environments and streets	----- 49%

TOP 3
COMMUNITY
ISSUES



Distracted driving	----- 60%
Homelessness	----- 33%
Illegal drug use	----- 23%

TOP 3
BARRIERS TO
HEALTHCARE



Underinsured	----- 40%
Inconvenient office hours	----- 33%
Difficulty finding the right provider for my care	----- 32%

TOP 3
HEALTH
CONDITIONS



Alcohol/substance abuse	----- 52%
Overweight/obesity	----- 46%
Mental health issues	----- 42%

Want More?

- Find out how your city compares to other cities in Maricopa County.
- Submit a Data Request to obtain regional survey results.
- Join Synapse to partner with local organizations.

Contact:

Eileen Aguilar
(602) 859-4763

Eileen.Aguilar@maricopa.gov

Data Request:

<https://www.maricopa.gov/data-request>